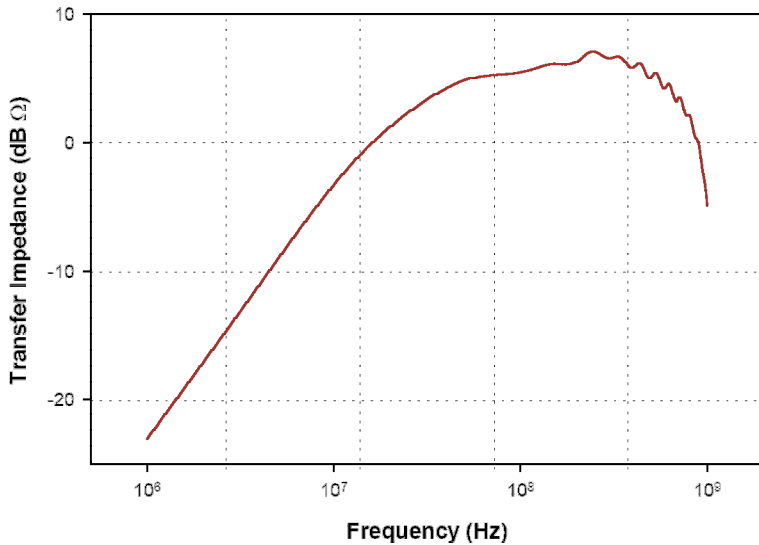
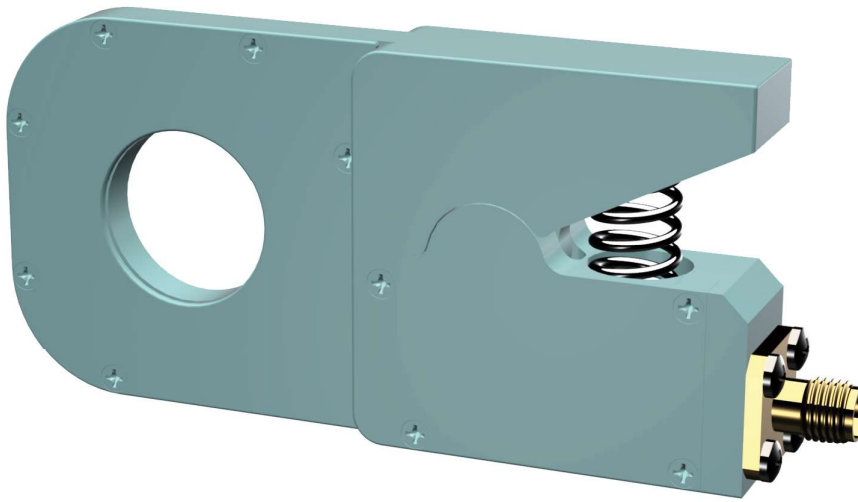


## CURRENT PROBE

The F-39-4 Current Probe has a split core mechanical design permitting it to easily clip on and off a conductor. It has an extremely small form factor for clipping on conductors in small spaces. The F-39-4 offers a wide bandwidth measurement capability for the lab and bench environment.



### Specifications

Frequency:	1 MHz – 1 GHz
Internal diameter:	18 mm
Length:	85 mm
Height:	6 mm
Z <sub>t</sub> Ω <sup>1</sup> :	2.0
dBΩ <sup>1</sup> :	6
Connector:	SMA
DC to 400 Hz:	20 amperes
RF(CW):	1 ampere
Peak Pulse Current <sup>2</sup> :	10 amperes

1: Probe calibrated with 50 Ω + j0Ω Load Impedance.  
2: Depends upon the pulse width and pulse rep. rate.



Fischer Custom Communications, Inc.

19220 Normandie Ave., Unit B Torrance, CA 90502  
Phone: 310-303-3300  
Email: sales@fischercc.com

© Fischer Custom Communications, Inc.