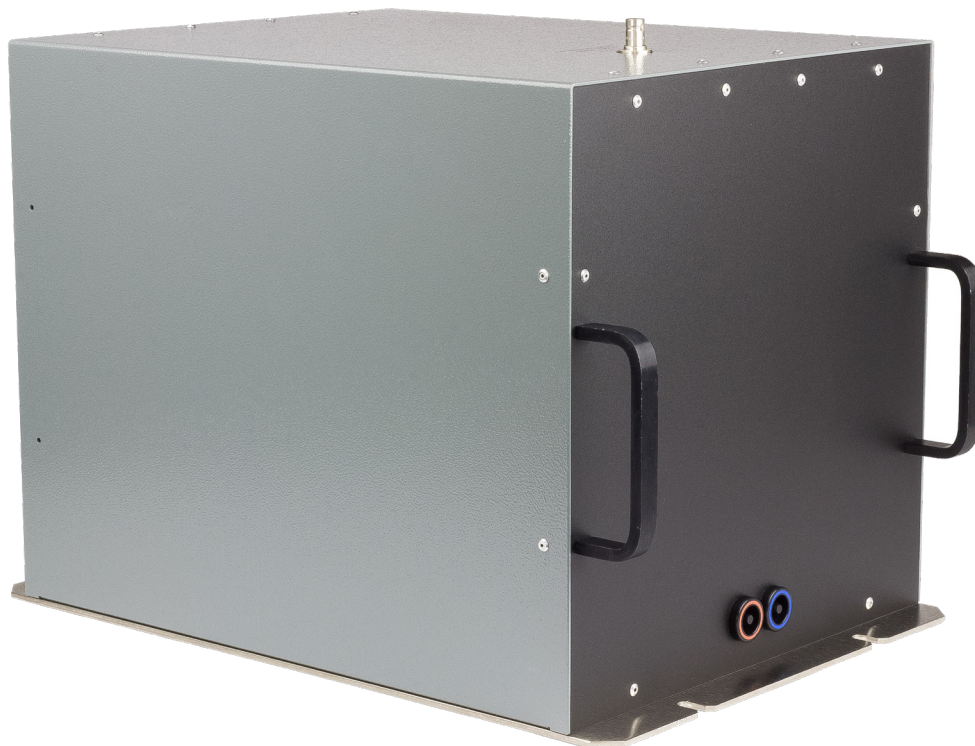


COUPLING/DECOUPLING NETWORK



FCC-801-M2-100A-1

Specifications

Application:	IEC 61000-4-6 Conducted Immunity
Frequency:	150 kHz – 80 MHz
Supply Lines:	2 Power Conductors
Impedance:	Frequency dependent 150 kHz – 26 MHz: $150 \Omega \pm 20 \Omega$ 26 MHz – 80 MHz: $150 \Omega +60 \Omega - 45 \Omega$ Published IEC 61000-4-6, Table 3
Maximum Current:	100 A
Maximum Voltage:	DC - 60 Hz, 250 V line to ground maximum 480 V line to line maximum
RF Disturbance Port:	
Power Rating:	12 Watts max
EUT/Mains Connector:	6 mm Multi-Contact Safety Socket
RF Disturbance Port:	50 Ω BNC
Dimensions (L x W x H):	38 cm x 31 cm x 31 cm
Weight:	13.2 kg

FCC

Fischer Custom Communications, Inc.

19220 Normandie Ave., Unit B Torrance, CA 90502
Phone: 310-303-3300

Email: sales@fischercc.com

© Fischer Custom Communications, Inc.